

ECGC LTD.,

Southern Regional Office - SRO -1
770,-A, VII Floor, Spencer Tower,
Anna Salai, Chennai - 600 002.

VOLUME - II

PRICE BID

FOR THE PROPOSED INTERIOR, FURNISHING ELECTRICAL,
AIR-CONDITIONING AND RELATED WORKS FOR
CHENNAI SOUTH BRANCH PREMISES FOR ECGC LTD.,
AT FIRST FLOOR, No. 15, SECOND MAIN ROAD,
NEW COLONY, CHROMPET, CHENNAI 600 044.

Consultants:



No. 258, Tambaram - Velachery Road,
Selaiyur, Chennai 600 073.
Mobile : 98412 81968

**PROPOSED INTERIOR, FURNISHING ELECTRICAL, AIR-CONDITIONING AND
RELATED WORKS FOR CHENNAI SOUTH BRANCH PREMISES FOR ECGC LTD., AT
FIRST FLOOR, No. 15, SECOND MAIN ROAD, NEW COLONY,
CHROMPET, CHENNAI 600 044.**

SUMMARY OF WORKS

S.No	Description	Amount
A	Interior Furnishing Works	
B	Electrical Works	
C	UPS Wiring and accessories	
D	Air-conditioning Works	
E	Fire Alarm/ fire Extinguishers Works	
F	Lan Cabling & Accessories	
G	Voice Network	
H	Furniture & Accessories	
I	UPS and Batteries	
	Total Amount	Rs.

In Words Rupees

Contractor

LIST OF MATERIALS TO BE USED IN THE WORK

S.NO.	MATERIALS	BRAND NAME
1	Gyp board false Ceiling	India Gypsum, Saint Gobain, La Gyp
2	Hard wood	Padak, Sal
3	Plywood	IS 303 grade
4	Flush shutters	Archid ply
5	Ornamental mouldings & lippings	Teak/ Beech wood - 1st quality
6	Laminate	Greenlam, Merino, Formica
7	Adhesive for joints & laminates	Fevicol - SH,
8	Adhesive for wall panelling	Fevicol - SR
9	Floor spring	Everite, Dyna
10	Door closure	Eeverite, Dyna
11	Door locks	Godrej pin lever cylindrical
12	Drawer locks	Godrej multi purpose
13	Sliding channel	Ebco or Equivalent
14	Hardware	Ebco or Equivalent
15	Glass	Saint gobain, Modi Guard
16	Vertical blinds	Vista Levolor, trident
17	Handles	Stainless steel finish
18	Soft board	Jolly board
19	Paints	Asian, ICI, Dulux,
20	Aluminium	Hindalco, jindal
21	Fabric for pinup board	Red Velvet
22	Granite	Lacquer Red

**PROPOSED INTERIOR FURNISHING AND ALLIED WORKS FOR
CHENNAI SOUTH BRANCH PREMISES FOR ECGC LTD., AT FIRST FLOOR,
No. 15, SECOND MAIN ROAD, NEW COLONY, CHROMPET, CHENNAI 600 044.**

SCHEDULE OF QUANTITIES FOR INTERIOR & FURNISHING WORK

Sl.	Description	Quantity	Rate	Unit	Amount
A	PARTITIONS				
1	Providing entrance partition / door using 12mm thick clear float glass with teak/ Beech wood top, sides and bottom rails of size 6"x21/2" with exposed edges machine polished, minimal glass etching around and logo at suitable height as directed including accessories, 12" stainless steel handles on both sides and hardwares such as pivots at top, locks etc., and polishing the rails to required shade to match the interior & exterior including all incidental materials etc., complete.,	40.00 Sft		Sft	
2	Providing panelling to the main door opening to fix the 12mm glass door using 19mm tk. plywood and pasted with 1mm laminate, with teak wood lipping for the edges polished to match the interior.	50.00 Sft		Sft	
3	Providing two way automatic floor spring for the entrance door including top pivots, chasing the floor, fixing, grouting & finishing the same and make good including all incidental materials etc., complete. (dorma make only)	2.00 No.s		Each	
4	Providing full height double skin fully blocked partitions using CW frames of 2 1/2"x2" size spaced at 2'0" c/c maximum for the frame work, fixed with 6mm plywood on both sides and lined with 1mm tk. laminate with necessary grooves of 1mm thick. The rate shall include the cost of providing 100mm wide skirting with 1mm tk. laminate at base and a 100mm wide border at the top including making necessary slots for cable conduits to pass through and all incidental materials etc., complete.	950.00 Sft		Sft	

Sl.	Description	Quantity	Rate	Unit	Amount
5	Providing full height double skin partly glazed partitions using CW frames of 2 1/2"x2" size spaced at 2'0" c/c maximum for the frame work, fixed with 6mm plywood on both sides and lined with 1mm tk. laminate with necessary grooves of 1mm thick. The rate shall include the cost of providing 100mm wide skirting with 1mm tk. laminate at base and a 100mm wide border at the top and shall include the cost of providing 6mm tk. plain float glass to suitable sizes, including making necessary slots for cable conduits to pass through and all incidental materials etc., complete.	380.00 Sft		Sft	
6	Providing low height double skin partitions of the same type using CW frames of 2 1/2"x2" size spaced at 2'0" c/c maximum for the frame work, fixed with 6mm plywood on both sides and lined with 1mm tk. laminate with necessary grooves of 1mm thick. The rate shall include the cost of providing 100mm wide skirting with 1mm tk. laminate at base & including making necessary slots for cable conduits to pass through and all incidental materials etc., complete.	320.00 Sft		Sft	
7	Providing panelling to columns and walls as necessary using CW frames of 2"x 1" size spaced at 2'0" c/c maximum for the frame work, fixed with 6mm plywood and lined with 1mm tk. laminate with necessary grooves of 1mm thick. The rate shall include the cost of providing 100mm wide skirting with 1mm tk. laminate at base and a 100mm wide border at the top and shall include the cost of providing necessary slots for cable conduits to pass through and all incidental materials etc., complete.	150.00 Sft		Sft	

Sl.	Description	Quantity	Rate	Unit	Amount
8	<p>Providing flush shutter for manager and other cabins using 1 1/4" thick (30mm) solid core flush door with 1mm laminate with necessary grooves & 10mm etched glass as per design, fixed with teak wood ornamental moulding for the sides including necessary hardwares such as 5" brass hinges, handles, door stopper etc.,</p> <p>All the exposed edges of shutter shall be fixed with teak wood lipping and polished to match the interior/ colour scheme. 2 1/2" x 1" wooden frame work shall be screwed to the opening in partition, as provided in window opening shall be provided as door frame rebate. The rate shall exclude the cost and fixing charges of round stainless steel mortise lock.</p>	165.00 Sft		Sft	
9	Providing door closer for doors at manager cabin, cash cabins etc.,	6.00 No.s		Each	
B	FALSE CEILING				
1	<p>Providing Gyp board plain false ceiling using 12.5 mm thick Gyp board suspended from ceiling and supported on sides using perimeter channels all round. The intermediate spaced at 4'0" c/c to be suspended at reqd. height using rowl plug, soffit cleat and ceiling angle at 4'0" c/c on either direction and ceiling channel at 2'0" c/c is then connected to intermediate channel by connecting clips to form the frame work.</p> <p>Gyp board, then to be screwed to the ceiling channel and joints pasted with paper tape and finished. All as per India Gypsum Limited specification. The rate shall include making/ providing openings for light fittings, A/c diffusers/continuous grills etc., All such openings made shall be suitably reinforced and shall withstand the loads/vibrations which are likely to act, and finished with two or more coats of acrylic emulsion paint (white/ Rain drops of ASIAN PAINTS) over a coat of putty.</p>	1400.00 Sft		Sft	

Sl.	Description	Quantity	Rate	Unit	Amount
2	Providing and fixing in position false ceiling in Armstrong 600 X 600 mm X 15/16 mm Dune Supreme RH 99 Prima tile with Regular Edge framework as specified by Armstrong Co. with suspenders wherever required. Making necessary framework for A.C. ducting, if any, and necessary cutouts for diffusers and light fittings, taping and finishing to proper line and level, including making grooves and trap doors for A.C. unit in 18mm thick M.R. Grade Plywood with Stainless Steel hinges and locks with moulding 1" X 1" for edges including finishing with White Plastic Emulsion Paint etc. complete in all respect. (Note :- Only the plan area will be measured for payment. No extra payment will be made for cutouts, grooves, mouldings etc.)	280.00 Sft		Sft	
C TABLES & FURNITURES					
1	Manufacturing and placing in position of tables for managers & staff using 19mm. thick plywood to size as shown in drawing. One keyboard drawer & three storage drawers for manager tables, and one keyboard drawer at centre, one drawer at right or left side below conter top with storage cupboard below for offier/staff tables, space to accomodate CPU etc., shall be provided. All the plywood edges shall have teak wood lipping & the inner surfaces shall be painted. The exposed surfaces and top shall be pasted with 1mm laminate. Necessary hardware fittings like draw sliders, lock, handles, wire manager etc., shall be provided. A sheet of 6mm thick glass shall be provided over the manager tables only.				
a	Reception table (as per design)	1.00 No.s		Each	
b	Branch Manager 6'6"x2'6"	1.00 No.s		Each	
c	Officer/ Clerical staff table 5'6"x2'6"	6.00 No.s		Each	

Sl.	Description	Quantity	Rate	Unit	Amount
d	Server room table 5'6"x2'6"	1.00 No.s		Each	
e	Meeting table	1.00 No.s		Each	
f	Conference table	1.00 No.s		Each	
2	Manufacturing and placing in position of side storage for SWC, officer & clerical staff using 19mm. thick plywood as shown in drawing. All the plywood edges shall have teak wood lipping & the inner surfaces shall be painted. The exposed surfaces shall be pasted with 1mm laminate with necessary grooves as per the drawing. Necessary hardware fittings like draw sliders, lock, handles etc., shall be provided.	340.00 Sft		Sft	
D SOFT FURNISHING ITEMS					
1	Supplying & fixing of acrylic vertical blinds 100mm wide to windows, with all accessories and fixing charges etc., complete.	260.00 Sft		Sft	
2	Providing pinup board using soft board over 9mm thick plywood with teak wood beadings at the edges, covered with fabric of basic price Rs.150/- per meter.	20.00 Sft		Sft	
3	Providing Complaint/ Suggestion 1'6" length, 0'9" wide and 1'6" height with 19mm tk. Plywood and lined with 1mm tk. Laminate for top & exposed sides. Exposed edges of plywood shall be fixed with teak wood beading suitably polished and the back side shall be covered with 6mm tk. plywood. The inner sides shall be painted with two coats of enamel paint over a coat of primer & two coats of putty.	1.00 No		Each	

Sl.	Description	Quantity	Rate	Unit	Amount
4	Providing sorting cupboard in the form of pigeon hole box 3' 0" length, 3' 0" height and 12" depth with 19mm tk. Plywood and lined with 1mm tk. Laminate for top & exposed sides. Exposed edges of plywood shall be fixed with teak wood beading suitably polished and the back side shall be covered with 6mm tk. plywood. The inner sides shall be painted with two coats of enamel paint over a coat of primer & two coats of putty.	1.00 No.		Each	
5	Painting The inner wall surfaces with two or more coats of acrylic emulsion paint over a coat of putty and primer.	2000.00 Sft		Sft	
			TOTAL	Rs.	

In Words Rupees

Contractor

LIST OF MATERIALS TO BE USED IN THE WORK

S.NO.	MATERIALS	BRAND NAME
1	Armoured cable	CCI/ Finolex/ Universal
2	Copper cables	Polycab/ RR
3	Lan cables	D-Link/ AMP/ Molex
4	Telephone cables	Delton
5	Speaker wires	Finolex/ RR Cables or Equivalent
6	Main switch, Change overs	L & T/ Bosma
7	Selector switch/ Indication lamps	L & T/ Vaishnav
8	Distribution boards	MDS Legrand/ L & T Hager
9	Metal clad sockets	MDS Legrand/ L & THager
10	Lugs & Glands	Dowells/ Praca (double comp. type Glands)
11	PVC Conduits	Avonplast/ Bajajplast (medium class)
12	Modular switches & sockets	MK/ Anchor/ (Model to be appd. by architect)
13	Lan switches/ jacks	D-Link/ Molex or Equivalent.
14	Light fittings (FTL/ CFT/ LED)	Philips/ Elenserve/ Syska
15	MCB'S	L&T/ MDS/ Schneider
16	Ceiling fans	Crompton Greaves/ Polar (Model to be appd. By the architect)
17	Exhaust fans	Almonard/ Crompton
19	Speakers	Ahuja, Philips
20	UPS/ Invertors/	Numeric/ Elenserve/ V guard or Equivalent
21	Diesel Generators	Cummins/ Kirloskar

**PROPOSED INTERIOR FURNISHING AND ALLIED WORKS FOR
CHENNAI SOUTH BRANCH PREMISES FOR ECGC LTD., AT FIRST FLOOR,
No. 15, SECOND MAIN ROAD, NEW COLONY, CHROMPET, CHENNAI 600 044.**

SCHEDULE OF QUANTITIES FOR ELECTRICAL WORK

Sl.	Description	Quantity	Rate	Unit	Amount
A	MAINS & DISTRIBUTION BOARDS				
1	Supply, Erection, Testing & Commissioning of wall mounting cubical type main Switch board (MSB) comprising as under Main Bus Bar Rating : 125A TPN AL.BUS 1-25x6mm AL FL/PH 1-25x6mm AL FL/n Incomers: 125A 4P MCCB - 1No OUTGOINGS :- 100A TPN FSU - 1NO 63A TPN FSU - 2NO 32A TPN FSU - 1NO as spare 1-96mm SQ Flush, MISC Ammeter Scaled (0-200)A & PF Meter 1-96mm SQ Flush, MISC voltmeter Scaled (0-600V) 3-R,Y,B, Indicating Lamps 1-3 Way & Off Ammeter Selector Switch 1-3 Way & Off Voltmeter Selector Switch 1-Set of Potential Transformers 1Set Blank Gland Plate	1.00		Set	
2	Supply, erection, testing and commissioning of three phase 4 WAY, TPN MCCB DB double door vertical type, IP 42 powder coated with 100A TPN MCB - 1No as INCOMER 10/20/32A SP MCB - 12 Nos. as OUTGOING for AC and POWER Including all interconnections & accessories etc	1.00		Set	
3	Supply, erection, testing and commissioning of three phase 4 WAY, TPN MCB DB double door type, IP 42 powder coated for lighting with 63A TPN MCB - 1No as INCOMER 10/20/32A SP MCB - 12 Nos. as OUTGOING Including all interconnections & accessories etc	1.00		Set	

Sl.	Description	Quantity	Rate	Unit	Amount
4	Supply & Installation of 100A 4Pole Changeover with steel sheet enclosure	1.00 Set		Set	
B POWER CABLES & CONDUIT WIRING					
1	Supplying, laying, testing & commissioning of PVC / LT insulated 1.1KV grade armoured conductor cables of the following sizes, clamping on to the wall as per site condition.				
a	3.5C x 35 Sqmm aluminium armoured PVC cable	30.00 Mtr		Mtr	
b	3.5C x 25 Sqmm aluminium armoured PVC cable	15.00 Mtr		Mtr	
c	4RX 16 Sq.mm aluminium armoured PVC cable	15.00 Mtr		Mtr	
d	5R X 10Sqmm. Copper Cable in a suitable PVC FRLS conduits	10.00 Mtr		Mtr	
e	3R X 10Sqmm. Copper Cable in a suitable PVC FRLS conduits	10.00 Mtr		Mtr	
C END TERMINATIONS					
1	Supplying and terminating the end of cables of the following sizes using Siemens type single compression cable glands, crimping type aluminium / copper sockets of required size, gland earthing clips etc., complete.				
a	3.5C x 35 Sqmm aluminium armoured PVC cable	2.00 Set		Set	
b	3.5C x 25 Sqmm aluminium armoured PVC cable	2.00 Set		Set	
c	4RX 16 Sq.mm aluminium armoured PVC cable	2.00 Set		Set	
d	5R X 10Sqmm. Copper Cable in a suitable PVC FRLS conduits	4.00 Set		Set	
e	3R X 10Sqmm. Copper Cable in a suitable PVC FRLS conduits	2.00 Set		Set	
D AIR CONDITIONING WIRING & ACCESSORIES					
1	SFTC of plug and socket boards 32 A rating in steel sheet enclosure including 1 No. suitable DPMCB for air conditioners cassette and high wall mount type and 2.0 Tr & 1.0Tr capacity.	8.00 Set		Set	

Sl.	Description	Quantity	Rate	Unit	Amount
2	Wiring in position 2 runs of 6.0 sq.mm. cable and 1 run of 4.0 sq.mm cable for earth from Main D.B. to 2air - conditioners in P.V.C. conduit pipes including chasing in walls / floor wherever necessary.	40.00 Mtr		Mtr	
3	Wiring in position 2 runs of 4.0 sq.mm. cable and 1 run of 2.5 sq.mm cable for earth from Main D.B. to 2 Nos split air - conditioners in P.V.C. conduit pipes including chasing in walls / floor wherever necessary.	140.00 Mtr		Mtr	
E RAW POWER					
1	Wiring in position 3 runs of 2.5.sq.mm cable for circuits from power D.B. to required places (work stations) in P.V.C. conduit pipes including chasing in walls / floor wherever necessary	240.00 Mtr		Mtr	
2	Supply,fixing, testing & commissioning of 3No. 6A. 2/3 multi pin socket outlet in raw power circuit controlled with 1No. 6A one way switch in a steel sheet enclosure with 8 module top plate including dummies and incidental materials etc., for work stations.	13.00 No.s		Each	
3	Supply,fixing, testing & commissioning of 16A. multi pin socket outlet in raw power circuit controlled with 1No. 6A one way switch in a steel sheet enclosure with top plate and incidental materials etc., for printers, copiers, dining areas and other gadgets etc., complete.	8.00 No.s		Each	
F LIGHTING WIRING & ACCESSORIES					
1	Wiring in position 3 runs of 2.5.sq.mm cable for circuits from LBD D.B. to required places (work stations) in P.V.C. conduit pipes including chasing in walls / floor wherever necessary	380.00 Mtr		Mtr	
2	Supply,fixing, testing & commissioning of the following switch controls in steel sheet enclosure including 3 runs of 1.5sqmm, steel sheet enclosure & modular top plate and all incidental materials etc., complete.				
	Primary point	35.00 No.s		Each	
	Secondary point	6.00 No.s		Each	
	1 fan controlled by step type regulator with switch	5.00 No.s		Each	
	wall fan point	14.00 No.s		Each	

Sl.	Description	Quantity	Rate	Unit	Amount
	Exhaust fan point	3.00 No.s		Each	
	1 No. 6A socket controlled by single switch in switch board	10.00 No.s		Each	
	1No. Buzzer with bellswitch incl. wiring connections	1.00 No.s		Each	
G	TELEPHONE WIRING & ACCESSORIES				
1	Wiring in position 1 run of 10 pair 0.5 sq.mm telephone cable in separate P.V.C. conduit pipes including chasing in walls / floor to necessary work stations.	40.00 Mtr		Mtr	
2	Supplying and fixing of 2x10 pair krone connector in steel sheet enclosure with all incidental materials etc., complete.	1.00 No.s		Each	
3	Wiring in position 1 run of 2 pair 0.5 sq.mm telephone cable in separate P.V.C. conduit pipes including chasing in walls / floor to necessary work stations.	200.00 Mtr		Mtr	
4	Supplying, fixing testing commissioning of RJ-11 telephone sockets in separate steel sheet enclosure including all incidental materials etc., complete.	12.00 No.s		Each	
H	LIGHTING & FIXTURES				
1	Supply & fixing charges for the following light fittings with required hardwares such as suspension wires from ceiling, false ceiling, anchor fasteners, chains, bolts, nuts etc., complete.				
a	2 / 2 LED light with driver Power - 36 W suitable for recessed mounting with polycarbonate /PMMA diffuser cool white - Working voltage range from 90 V - 265 V AC input P.F .0.9	7.00 No.s		Each	
b	Square LED down light with driver Power -18 W suitable for recessed mounting with polycarbonate /PMMA diffuser cool white - Working voltage range from 90 V - 265 V AC input P.F .0.9	33.00 No.s		Each	

Sl.	Description	Quantity	Rate	Unit	Amount
c	Round LED down light with driver Power -18 W suitable for recessed mounting with polycarbonate /PMMA diffuser warm white - Working voltage range from 90 V - 265 V AC input P.F .0.9	9.00 No.s		Each	
d	Ornamental LED spot light with driver Power -3 W suitable for recessed mounting with secondary lens - with adjustable tilt - Working voltage range from 90 V - 265 V AC	3.00 No.s		Each	
e	Fancy light - Suspended type	1.00 Set		Set	
f	Strip light cool white 5W/ Mtr.	20.00 Mtr		Mtr	
g	Florecent T 8 -18 W - 2 feet tube	11.00 No.s		Each	
h	Florecent T 8 -36 W - 4 feet tube	10.00 No.s		Each	
i	Supply & fixing of 48" ceiling fan.	4.00 No.s		Each	
j	Supply & fixing of 24" ceiling fan.	1.00 No.s		Each	
k	Supply & fixing charges for wall fan	14.00 No.s		Each	
l	Supply & fixing of 9" exhaust fan.	5.00 No.s		Each	
m	Supply & fixing charges for ordinary cfl lamp 15W with holders in toilets etc.,	4.00 No.s		Each	
I EARTHING					
1	Providing earthing two numbers , One for main D.B. and another to computers (through UPSDB) including excavating the P.C.C. floor/ earth to 6'0" depth and providing earthing with 50mm dia. G.I. pipe with perforations connected through copper wire including copper flat including copper plate of size 300mm x 300mm, G.I. bolts and filled up with layers of charcoal, salt and earth. (Earth provided for computers shall not be used for any other purpose)	2.00 No.s		Each	

Sl.	Description	Quantity	Rate	Unit	Amount
2	Supplying and laying of 8 SWG bare copper wire from the main D.B. to the earth pit including all accessories complete	15.00 Mtr		Mtr	
3	Supplying and laying of 6 Sqmm multi stranded copper wire for UPS earth in suitable PVC conduit with all incidental materials etc., complete.	15.00 Mtr		Mtr	
	TOTAL			Rs.	

In Words Rupees

Contractor

**PROPOSED UPS WIRING AND ACCESSORIES FOR CHENNAI SOUTH BRANCH PREMISES FOR
ECGC LTD., AT FIRST FLOOR, No. 15, SECOND MAIN ROAD,
NEW COLONY, CHROMPET, CHENNAI 600 044.**

SCHEDULE OF QUANTITIES FOR ELECTRICAL WORK

Sl.	Description	Quantity	Rate	Unit	Amount
A	UPS WIRING & ACCESSORIES				
1	SFTC of 1 No. 63A 4P MCB in separate steel sheet enclosure as input control.	1.00 Set		Set	
2	SFTC of 3 Nos. 63 A automatic phase selector switch with indicators in separate steel sheet enclosures and necessary connections.	1.00 No.		Each	
3	SFTC of 40A DPMCB in separate steel sheet enclosure as input control.	1.00 Set		Set	
4	Supply, erection, testing and commissioning of single phase 8 WAY, SPN MCBDB double door type, IP 42 powder coated for UPS and Emergency Lighting with 32A DP MCB - 1No as INCOMER 10A SP MCB - 6 Nos. as OUTGOING Including all interconnections & accessories etc.,	1.00 Set		Set	
5	Wiring in position 3 runs of 6 Sqmm cable for UPS as incoming and outgoing up to DB's in PVC conduit pipes including chasing in walls / floors wherever necessary.	15.00 Mtr		Mtr	
6	Wiring in position 3 runs of 2.5.sq.mm cable for circuits from UPS. D.B. to required places (work stations) in P.V.C. conduit pipes including chasing in walls / floor wherever necessary	340.00 Mtr		Mtr	
7	Supply, fixing, testing & commissioning of 3No. 6A. 2/3 multi pin socket outlet in UPS circuit controlled with 1No. 6A one way switch in a steel sheet enclosure with 8 module top plate including dummies and incidental materials etc., for work stations.	20.00 Set		Set	
TOTAL				Rs.	

In Words Rupees

Contractor

**PROPOSED INTERIOR FURNISHING AND ALLIED WORKS FOR
CHENNAI SOUTH BRANCH PREMISES FOR ECGC LTD., AT FIRST FLOOR,
No. 15, SECOND MAIN ROAD, NEW COLONY, CHROMPET, CHENNAI 600 044.**

SCHEDULE OF QUANTITIES FOR AIR-CONDITIONING WORK

SI	Description	Quantity	Rate	Unit	Total
A	CASSETTE TYPE AIR-CONDITIONERS				
1	Supply of the following capacity ceiling mounted cassette type split unit scroll compressor type. Copper piping and cables will be measured seperately and paid for. (Make : Daikin/ Carrier/ Blue star)				
a	3.5 Tr. To 3.8Tr. Capacity (Model No: Daikin FHC 42 or Equivalent)	2.00 No.s		No.s	
b	2.0 Tr to 2.2 Tr Capacity (Model No: Daikin FHC 26 or Equivalent)	2.00 No.s		No.s	
2	SITC of the following high wall mounted split air-conditioner unit with remote control. Copper piping and wiring will be measured separately and paid for. The unit shall include open pre fabricated stand without cage for the condensing unit (Daikin/ Carrier/ Blue star) (3 STAR RATING ONLY)				
a	1.8 Tr to 2.0 Tr split unit (Daikin Model No: FTC 60 PRV 16 or Equi)	1.00 No.S		No.S	
b	1.0 Tr split unit (Daikin Model No: FTC 35 PRV 16 or Equi)	2.00 No.S		No.S	
B	REFRIGERANT PIPING				
a	Hard Drawn Refrigerant Pipe for Ductable Unit				
1	Supply, fixing of refrigerant piping hard drawn suitable size as per manufacturer's recommendation for suction and liquid line. Copper pipeline along with connections to be insulated with elastomeric nitrile tubular rubber insulation of 9mm thickness, adhesive & joints sealed with black monsoon tape The rate shall include connecting wires between indoor and outdoor units	80.00 R. M		R. M	

SI	Description	Quantity	Rate	Unit	Total
b	Soft Drawn Refrigerant Pipe for Split Units				
1	Refrigerant Piping Soft Drawn 5/8", 1/2" or 3/8" for suction line as per tonnage and as per manufacturer's specification and 1/4" for liquid line, including connecting wires from outdoor to indoor unit. copper pipeline along with connections to be insulated with elastomeric nitrile tubular rubber insulation of 9mm thickness, adhesive & joints sealed with black monsoon tape.	70.00 R. M		R. M	
C	SFTC OF STABILIZERS				
a	Wall mountable stabilizer for Split units				
1	5 Kva	1.00 No.S		No.S	
2	3 Kva	2.00 No.S		No.S	
D	Ms Structural Work for Erection of Condensing Units of cassette units. (Excluding Catwalk)				
1	Readymade stand below the ceiling mounted split unit	4.00 No.S		No.S	
2	Civil pedestal for placing ODU Condensing Units. (Alternate item for structural work)	4.00 No.S		No.S	(QRO)
E	DRAIN PIPE WORKS				
1	Supply & erection of suitable size PVC Drain Piping for all the units.	140.00 R. M		R. M	
F	GAS CHARGING, PRESSURE TESTING & COMMISSIONING				
	Leading, Lifting, Positioning of indoor and outdoor units with necessary rubber pads, Pressure testing, Commissioning etc., complete.				
1	4.0TR Ceiling Mounted Cassette Unit - 2				
2	2.0TR Ceiling Mounted Cassette Unit - 2 No.s, High wall mount 2.0 Tr - 1, High wall mount 1.0 Tr -1No.s				
	Complete as above	1.00 Job		Job	
			TOTAL	Rs.	

In Words Rupees

Contractor

LIST OF MATERIALS TO BE USED IN THE WORK

S.NO.	MATERIALS	BRAND NAME
A	FIRE ALARM	
1	Smoke Detectors	Apollo/ GST/ Ravel/ or Equivalent
2	Heat Detectors	Apollo/ GST/ Ravel or Equivalent
3	Hooters	Apollo/ GST/ Ravel or Equivalent
4	Fire Alarm Panel	Apollo/ GST/ Ravel or Equivalent
B	FIRE EXTINGUISHERS	
1	H F C L/ A B C/ CO2 Types	Safety first, Excellent/ Safex or Equivalent

**PROPOSED INTERIOR FURNISHING AND ALLIED WORKS FOR
CHENNAI SOUTH BRANCH PREMISES FOR ECGC LTD., AT FIRST FLOOR,
No. 15, SECOND MAIN ROAD, NEW COLONY, CHROMPET, CHENNAI 600 044.**

SCHEDULE OF QUANTITIES FOR FIRE ALARM WORK

Sl. No	Description	Quantity	Rate	Unit	Amount
A	SMOKE AND FIRE ALARM				
1	Supply and installation, testing and commissioning of ionisation type smoke detectors to be mounted below false ceiling	10.00 No.S		No.S	
2	Supply and installation, testing and commissioning of photoelectric type smoke detectors to be mounted above false ceiling.	10.00 No.S		No.S	
3	Supply, installation, testing and commissioning of respose indicator	10.00 No.S		No.S	
4	Supply, installation, testing and commissioning of manual call point with break glass arrangement.	2.00 No.S		No.S	
5	Supply, installation and termination of 2 x 1.5 Sq.mm twisted FRLS armoured copper conductor cable approved by ETDC / TAC to be clamped neatly on ceiling / wall / . Partitions etc., with GI clamps.	110.00 Mtr		Mtr	
6	Supply, installation, testing and commissioning of dual tone electronic hooter	2.00 No.S		No.S	
7	Supply, installation, testing and commissioning of Heat detector.	1.00 No.S		No.S	
8	Supply, installation, testing and commissioning of 4-zone wall mounting type convetional fire alarm panel with battery unit, charging unit and other accessories. The panel should all required uindications such as Fire, , fault, open, low battery status and power supply status etc., all confirming to class 'A' operation.	1.00 No.S		No.S	
9	Supply, Installation, testing and commissioning of auto-dialer	1.00 No.s		No.s	

Sl. No	Description	Quantity	Rate	Unit	Amount
B	FIRE EXTINGUISHERS				
1	Supply and installation of (H F C L) Saclon Automatic Modular fire extinguishers. 10 Kg. capacity.	1.00 No.S		No.S	
2	Supply and installation of A B C stored pressure type fire extinguishers made out of steel manganese with ISI - 15683 marked ready to use with all accessories. 6 Kg. capacity.	4.00 No.S		No.S	
3	Supply and installation of CO2 carbon di oxide fire extinguishers made out of steel manganese with ISI - 15683 marked ready to use with all accessories. 2 Kg. capacity.	3.00 No.S		No.S	
	TOTAL				

In Words Rupees

Contractor

**PROPOSED ELECTRICAL AND RELATED WORKS FOR
CHENNAI SOUTH BRANCH PREMISES FOR ECGC LTD., AT FIRST FLOOR,
No. 15, SECOND MAIN ROAD, NEW COLONY, CHROMPET, CHENNAI 600 044.**

SCHEDULE OF QUANTITIES FOR LAN CABLING & ACCESSORIES WORK

S. No.	Description	Quantity	Rate	Unit	Amount
I	LAN/ DATA WIRING & ACCESSORIES				
1	Wiring in position 1 run of e-cat 6, 4 pair 0.5 sqmm data cable for computers in separate PVC conduit pipes including chasing in walls / floors from hub to necessary stations.	600.00 Mtr		Mtr	
2	Supplying, fixing testing commissioning of RJ-45 data sockets in separate enclosure including all incidental materials etc., complete.	22.00 No.s		Each	
3	Supply & fixing charges for 9U Hub Rack with Power Cord/ panel and accessories.	1.00 No.s		Each	
4	Supply & fixing charges for jack panel of 24 Port.	1.00 No.s		Each	
5	Supply & fixing charges for 24 port switch 10/100 Mbps including connections.	1.00 No.s		Each	
6	Supply & Laying of Cat 6 1Mtr Patch Cord	22.00 No.s		Each	
7	Supply & Laying of Cat 6 2Mtr Patch Cord	22.00 No.s		Each	
	TOTAL			Rs.	

In Words Rupees

Contractor

**PROPOSED INTERIOR FURNISHING AND ALLIED WORKS FOR
CHENNAI SOUTH BRANCH PREMISES FOR ECGC LTD., AT FIRST FLOOR,
No. 15, SECOND MAIN ROAD, NEW COLONY, CHROMPET, CHENNAI 600 044.**

SCHEDULE OF QUANTITIES FOR VOICE NET WORK

Sl.	Description	Quantity	Rate	Unit	Amount
A	VOICE NET WORK				
1	Supply fixing testing commissioning of ordinary telephone hand sets for extensions.	12.00 No.s		Each	
2	Supply fixing testing commissioning of telephone hand sets with digital caller ID display for extensions.	3.00 No.s		Each	
3	Supply fixing testing commissioning of multi function telephone hand set with caller ID display at reception table for telephone operator.	1.00 No.s		Each	
C	AUDIO VISUAL EQUIPMENTS AND ACCESSORIES				
1	Overhead LED Projector and Screen :- Supply and Installation of High resolution Over head LED Projector of make BEN Q MX 522 P. Complete in all respect. Incoming installation Cabling / wiring / fixing of OHP as well as supply and fixing of Retractable Screen of 6' X 4' size.	1.00 Set		Set	
D	CHANNEL MUSIC SYSTEM				
1	Supply, installation, testing and commissioning of DVD player. (Make: Samsung Model DVD D 530)	1.00 Set		Set	
2	Supply, laying, testing and commissioning of 2 Core 12/0.2 PVC insulated copper wire in 20mm Dia PVC conduit.	320.00 Mtr		Mtr	
3	Supply installation testing and commissioning of 6W ceiling mounted speaker suitable for flush mounting with suitable transformer.	12.00 No.s		Each	
4	Supply, installation, testing and commissioning of 100W hi-fi amplifier along with a goose neck mic for announcement. All connecting cords inclusive.	1.00 Set		Set	

Sl.	Description	Quantity	Rate	Unit	Amount
E	PUBLIC ADDRESS SYSTEM				
1	Provision of public address system for conference hall.	1.00 Set		Set	
	TOTAL				

In Words Rupees

Contractor

**PROPOSED INTERIOR FURNISHING AND ALLIED WORKS FOR
CHENNAI SOUTH BRANCH PREMISES FOR ECGC LTD., AT FIRST FLOOR,
No. 15, SECOND MAIN ROAD, NEW COLONY, CHROMPET, CHENNAI 600 044.**

SCHEDULE OF QUANTITIES FOR FURNITURE AND ACCERSSORIES

Sl.	Description	Quantity	Rate	Unit	Amount
A	RECEPTION & DINING				
	SOFAS & CARPETS & SEATINGS				
1	Supply of upholstered sofas in single, two and three seaters as per the architect's/ ECGC's selection to match the interior. (Make: Godrej/ Damro/				
a	Single seater	3.00 No.s		Each	
b	Twin seater	1.00 No.s		Each	
c	Three seater	1.00 No.s		Each	
2	Supply of dhurry/ carpet for reception lounge upto 2mtr x 2 mtr material and colour as approved by the architect/ ECGC to match the interior.	1.00 No.s		Each	
2	CORNER/ CENTRE TEAPOYS				
a	Supply of toughened glass top centre table with ss tubular frame work for reception sofas of approximate plan size 3'6" x 1'9" or as directed by the architect/ ECGC to suit the interior.	2.00 No.s		Each	
b	Supply of toughened glass top centre table with ss tubular frame work for reception sofas of approximate plan size 1'6" x 1'6" or as directed by the architect/ ECGC to suit the interior.	2.00 No.s		Each	
B	OFFICE CHAIRS				
	Supply of office chairs as per the selection of architect/ ECGC to suit the purpose and interior. (Provisional sum)				
	Branch Manager's chair	1.00 No.s		Each	
	Officer's chairs	6.00 No.s		Each	
	Conference room chairs	16.00 No.s		Each	
	Meeting room chairs	4.00 No.s		Each	
	Visitor's chairs	11.00 No.s		Each	
3	DINING TABLE WITH CHAIRS				
a	Supply of dining table comprising of stainless steel tube stand with glass top 12mm thick with similar tubular stand chairs with finger jointed seat - 4 No.s	1.00 Set		Set	

Sl.	Description	Quantity	Rate	Unit	Amount
b	Supply, installation, testing and commissioning of hot, normal and cold water dispenser three faucets type along with cooling cabinet 3Ltrs/ hr cooling and five Ltrs/ hr heating capacity. (Make: Voltas, Model : Voltas Mini Magic Super TT))	1.00 No.S		No.S	
c	Supply and fixing in position 253 Ltr 4 star rated double door refrigerator. Colour as available/ decided by the architect. (Make: Samsung)	1.00 No.S		No.S	
d	Supply and fixing in position of soft touch hard glass top induction hot plate. (Make : Prestige) (Make: Prestige along with the freebies)	1.00 No.S		No.S	
C STORAGES AND LOCKERS					
1	Supply and fixing in position of petty cash safe. (Make: Godrej Model No. Cash Box Coin Tray)	1.00 No.S		No.S	
2	Supply and fixing of digital weighing scale upto 10 Kgs with platform of atleast 250 x 200mm size with soft touch switch/ keyboard calibration facility/ battery backup soft on/ off switch/ mains on indications as per manufacturers specifications. (Make: Alfa or equivalent precision 1 gram)	1.00 Mtr		Mtr	
D SIGN BOARDS & DISPLAYS					
1	Supply, installation testing and commissioning of display board at front (road side) with illuminated board with LED and front consisting f acrylic letters set in acrylic/ aluminium composit boards as per the standards of ECGC with all electrical wiring and incidental materials etc., complete. (LED 's shall have 3year warranty)				
a	Size: 10' 0" x 3' 6" at road side	35.00 Sft		Sft	
b	Size: 6' 6" x 3' 0" at entrance	20.00 Sft		Sft	
2	Supply, installation testing and commissioning of display board at front (road side) with aluminium composite panel with 3M stickers as per the standards of ECGC with all incidental materials etc., complete.	20.00 Sft		Sft	

Sl.	Description	Quantity	Rate	Unit	Amount
3	Supply and fixing of engraved name plates for officers as per ECGC standards in brass duly painted.	10.00 No.s		Each	
4	Supply and fixing of stainless steel logo at reception and letters in three languages as ECGC as per the architects/ ECGC instructions including all incidental materials etc., complete.	1.00 Set		Set	
E STANDBY POWER SUPPLY					
1 INVERTER					
	Supply and Installtion of 3 kVA Inverter with app 4 hrs backup using Tubular batteries - 12 V 200 AH southern/sf - qty 4 nos , battery stand & interlinks	1.00 Set		Set	
F MISCELLANEOUS					
1	Provisional sum for supply of first aid kit	1.00 L.S		Set	
2	Provisional sum for supply of toilet accessories for gents, ladies and meeting room separate.	1.00 L.s		Set	
3	Provisional items for indoor artificial plants, greenscaping and art items.	1.00 L.s.		Set	
TOTAL					

In Words Rupees

Contractor

**PROPOSED ELECTRICAL AND RELATED WORKS FOR
CHENNAI SOUTH BRANCH PREMISES FOR ECGC LTD., AT FIRST FLOOR,
No. 15, SECOND MAIN ROAD, NEW COLONY, CHROMPET, CHENNAI 600 044.**

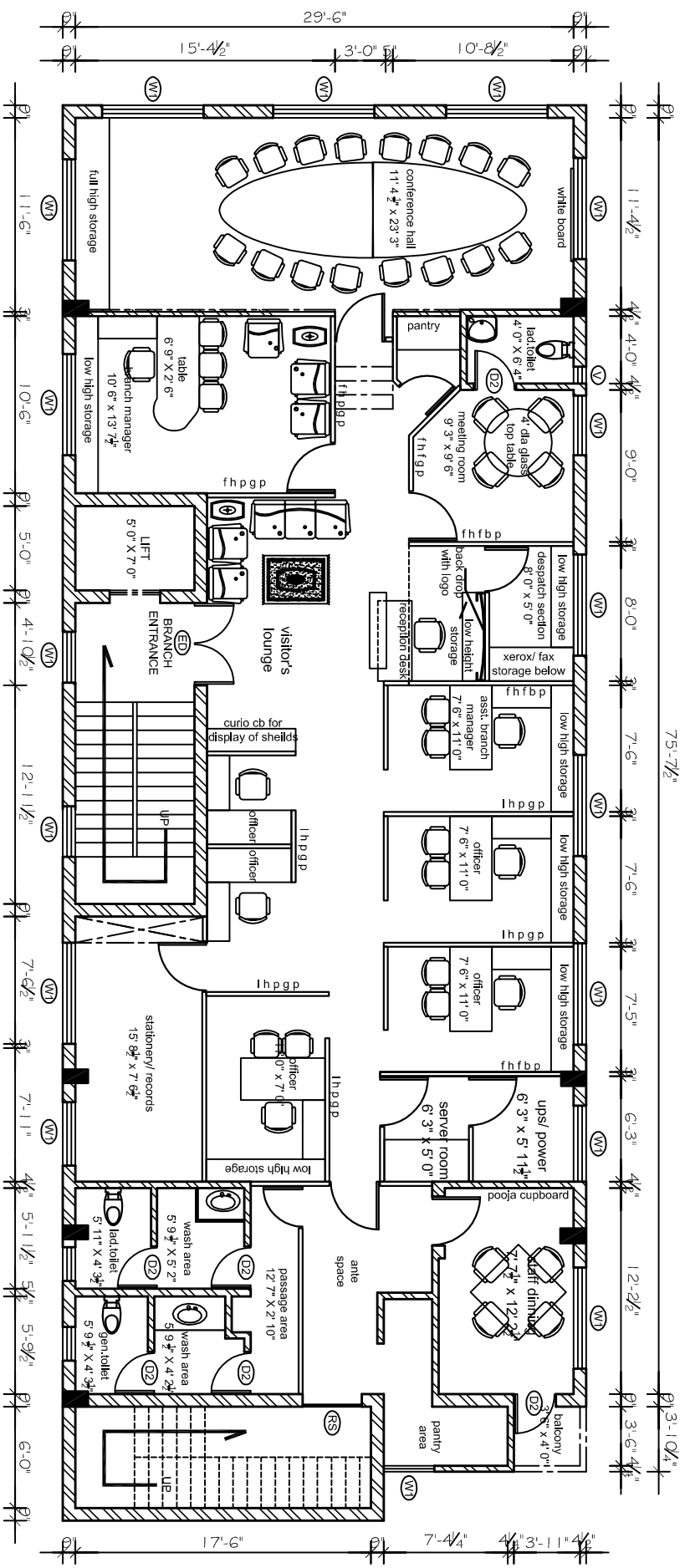
SCHEDULE OF QUANTITIES FOR UPS AND BATTERIES

Sl.	Description	Quantity	Rate	Unit	Amount
A	STANDBY POWER SUPPLY				
1	UPS/ BATTERIES Supply, installation, testing and commissioning of 5 KVA UPS (Numeric / Vguard/ Elenserve/ Sukam make) with approx. four hours backup using VRLA SMF batteries Exide/ Quanta/ Sukam 12 V- 120 AH - 20 No.s with all connection / connectors, battery stand to suit power room in steel frame work etc., complete.	1.00 Set		Set	
	TOTAL				

In Words Rupees

Contractor

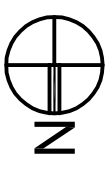
- LIST OF STAFF
 B.Manager - 1
 Asst.Manager - 1
 Officer - 6



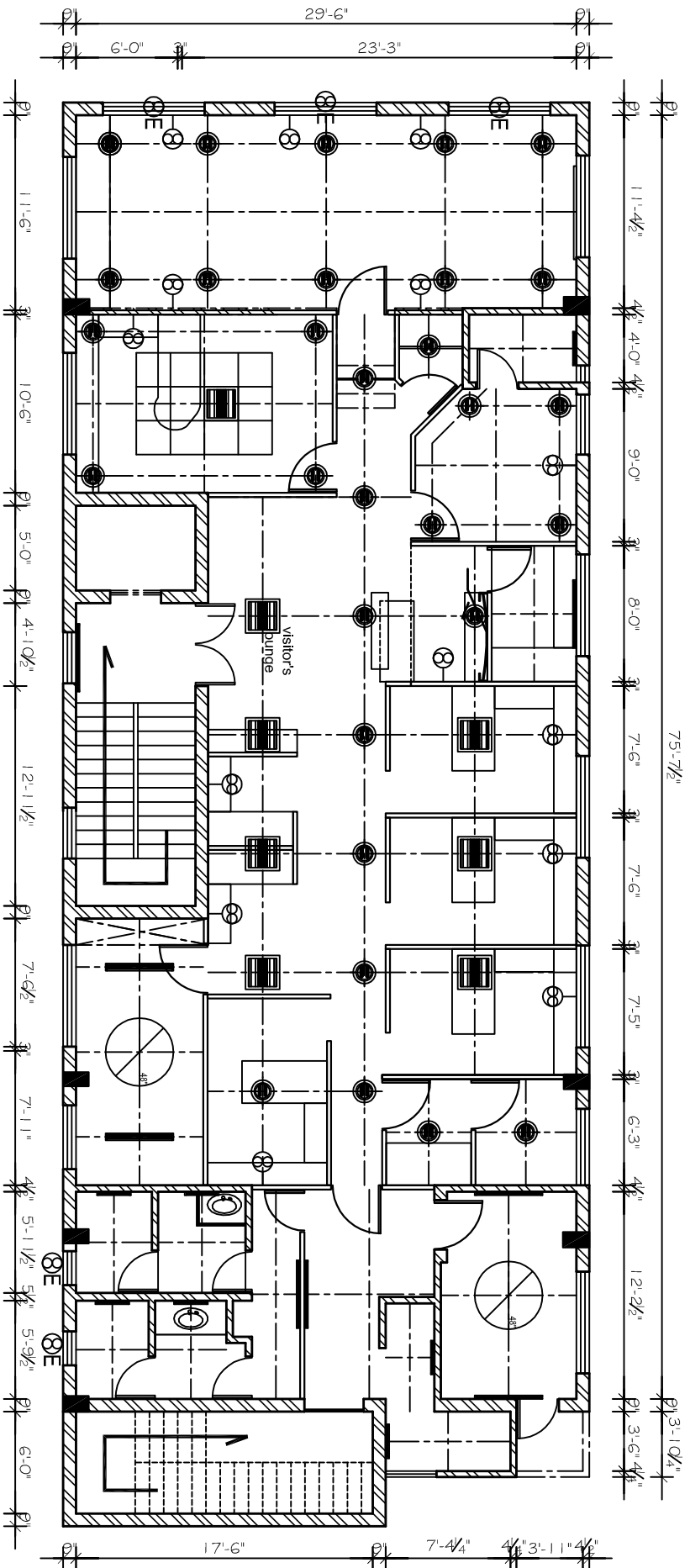
carpet area:
 branch area: 1472.00 sft. excl. toilets
 atm area : 101.00 sft.

PLAN SHOWING THE PROPOSED PREMISES FOR ECGC LIMITED BRANCH, AT TAMBARAM, CHENNAI.

INTERIOR_LAYOUT



FIRST FLOOR PLAN	REV NO: 00	DWG NO : ECGC_TBM_INT_09_02_2015
SHEET SIZE: A4 : L : 1:8	SCALE : 1" = 80"	architect: K.SRIDARAN, MOB. 98412 81968 OFF. 044 - 2239 2533



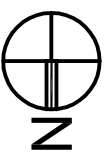
FIRST FLOOR LEVEL + 2.0'

carpet area:

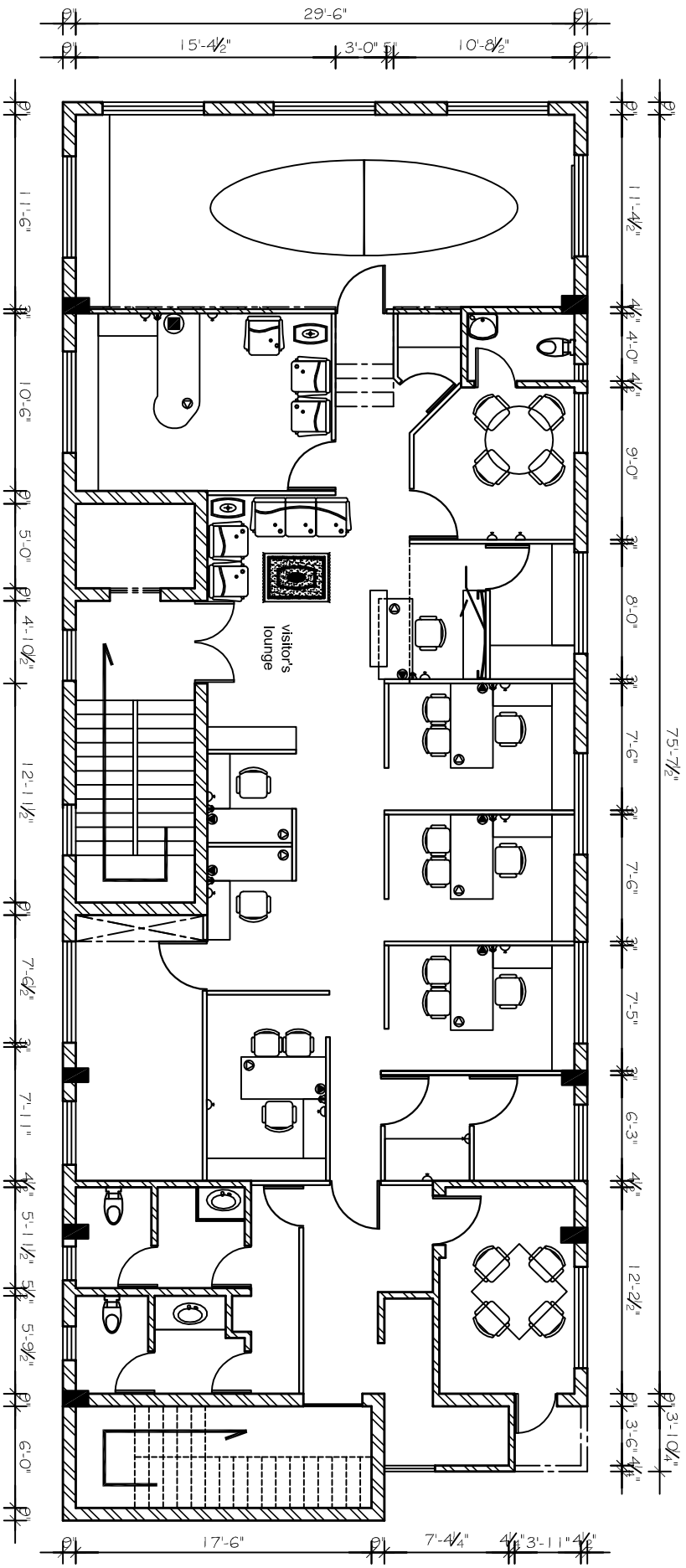
branch area: 1472.00 sft. excl. toilets
 atm area : 101.00 sft.

**PLAN SHOWING THE PROPOSED PREMISES FOR ECGC LIMITED BRANCH,
 AT TAMBARAM, CHENNAI.**

ELECTRICAL_LAYOUT



GROUND FLOOR PLAN	REV NO: 00	DWG NO : IB_SEL_INT_09_02_2015
SHEET SIZE: A4 : L : 1:8	SCALE : 1" = 80"	architect: K.SRIDARAN, MOB. 98412 81968 OFF. 044 - 2239 2533



FIRST FLOOR LEVEL + 2.0'

carpet area:

branch area: 1472.00 sft. excl. toilets

atm area : 101.00 sft.

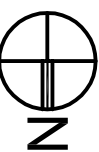
PLAN SHOWING THE PROPOSED PREMISES FOR ECGC LIMITED BRANCH, AT TAMBARAM, CHENNAI.

GROUND FLOOR PLAN

REV NO: 00

DWG NO : IB_SEL_INT_09_02_2015

POWER_LAYOUT

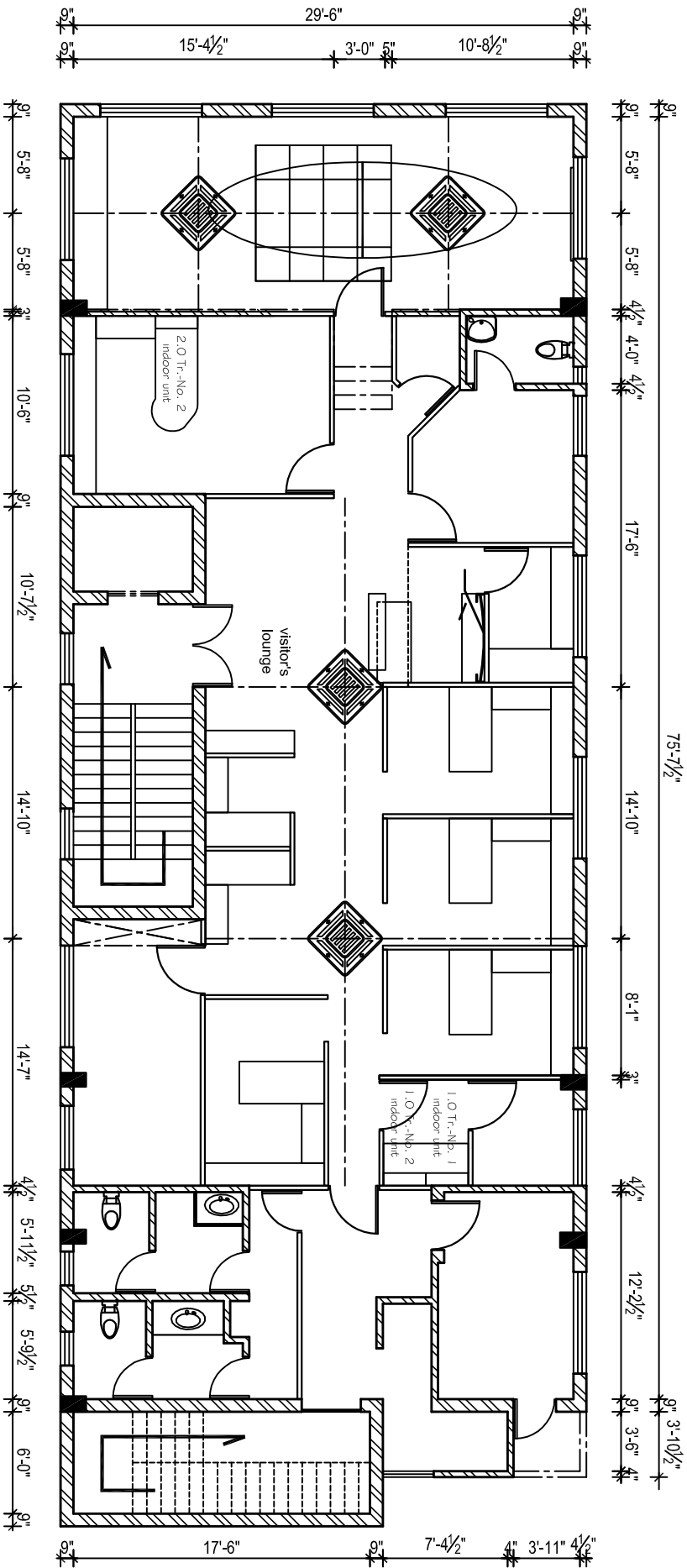


SHEET SIZE: A4 : L : 1:8

SCALE : 1" = 80"

architect: K.SRIDARAN, MOB. 98412 81968 OFF. 044 - 2239 2533

LIST OF STAFF
 B.Manager - 1
 Asst.Manager - 1
 Officer - 6



FIRST FLOOR LEVEL + 2' 0"

carpet area:

branch area: 1472.00 sft. excl. toilets

atm area : 101.00 sft.

PLAN SHOWING THE PROPOSED PREMISES FOR ECGC LIMITED BRANCH, AT TAMBARAM, CHENNAI.

GROUND FLOOR PLAN

REV NO: 00

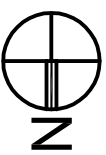
DWG NO : IB_SEL_INT_09_02_2015



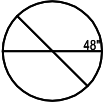
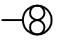

















SHEET SIZE: A4 : L : 1:8

SCALE : 1" = 80"

architect: K.SRIDARAN, MOB. 98412 81968 OFF. 044 - 2239 2533

AC_LAYOUT

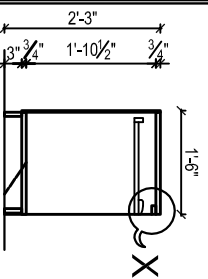


	24" FAN (ceiling mounted)		1 No. exhaust fan
	48" FAN (ceiling mounted)		1 No. wall mountable fan
	1 X 18W Flourascent tube light (surface mounted)		1 No. smoke detector
	1 X 36W Flourascent tube light (surface mounted)		1 No. RJ - 11 telephone socket (surface/ recess mounted)
	2 X 36W Flourascent tube light (surface mounted)		3 No.s 6A. Switched socket(UPS) + 1 No. 16 A. Master switch + 1 No. Data Socket (surface/ recess mounted)
	1 X 36W FL Tube Light (Recess mounted)		3 No.s 6A. Switched socket(UPS) + 1 No. 16A. Master switch + 2 No. Data Socket (surface/ recess mounted)
	2 X 36W FL Tube Light (Recess mounted)		disconnecting arrangement (recess mounted)
	1 X 18W CFL down lighter (Recess mounted)		AC SOCKET (recess mounted)
	2 X 18W CFL down lighter (Recess mounted)		16A Switched socket (recess mounted)
	2 X 36W CFL (Recess mounted)		6A Switched socket (recess mounted)
			switch board (recess mounted)

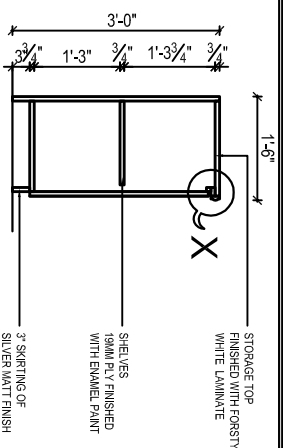
SYMBOL SYMBOL DESCRIPTION

DRAWING SHOWING THE STANDARD ELECTRICAL SYMBOLS

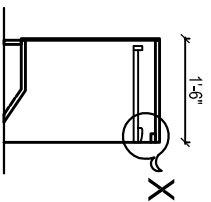
ELECTRICAL SYMBOLS	REV NO: 00	01-03-2010	DWG NO : IB_ELC_NOT_STANDARD
SHEET SIZE: A4:P:1:8	SCALE : 1" = 8'0"	architect: K.SRIDARAN, MOB. 98412 81968, OFF. 044 2259 2533.	



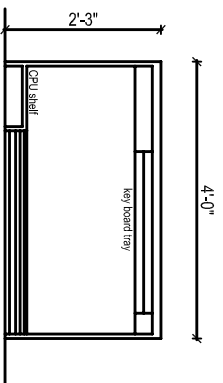
SECTION A



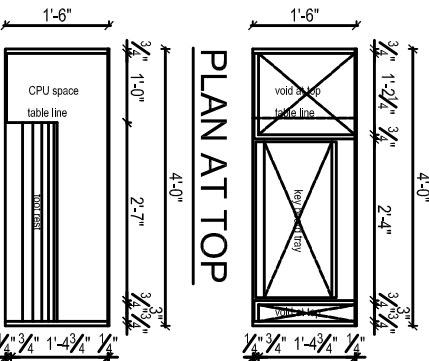
SECTION A



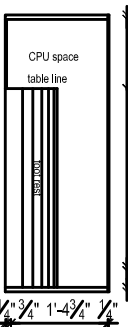
SECTION B



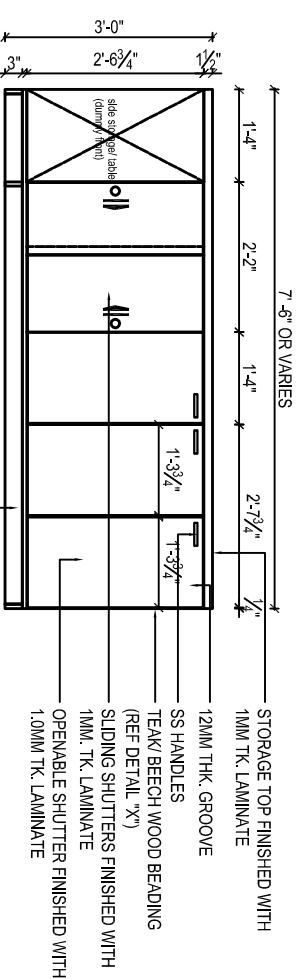
FRONT ELEVATION



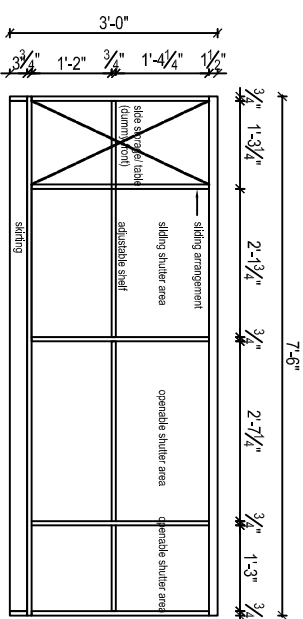
PLAN AT TOP



SIDE TABLE PLAN AT BOTTOM (scale 1" = 2'-0")



ELEVATION



LOW HEIGHT STORAGE UNIT (REAR SIDE OF TABLE) PLAN AT BOTTOM (scale 1" = 2'-0")

- GENERAL NOTE:**
1. Do not scale this drawing, follow figured dimensions only.
 2. Any discrepancy at site has to be brought to the notice of the architect before execution.
 3. All dimensions are in feet & inches.
 4. For make and shade of materials follow list of approved materials.
 5. For specification follow tech specification

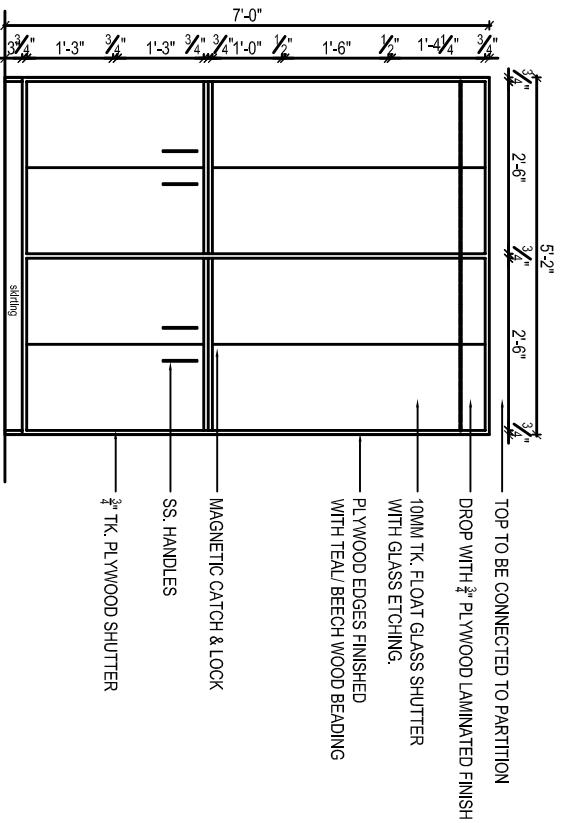
DRAWING TITLE
 Detail : SIDE TABLE
 Size : 4'0" X 1'6" X 2'3"
 Orient : Left & Right (as per site requirement)
 Detail : REAR SIDE STORAGE UNIT
 Size : 4'0" X 1'6" X 2'3"
 Orient : Left & Right (as per site requirement)

PROJECT TITLE
 EGG LTD.,
 TAMBARAM BRANCH,
 CHENNAI.

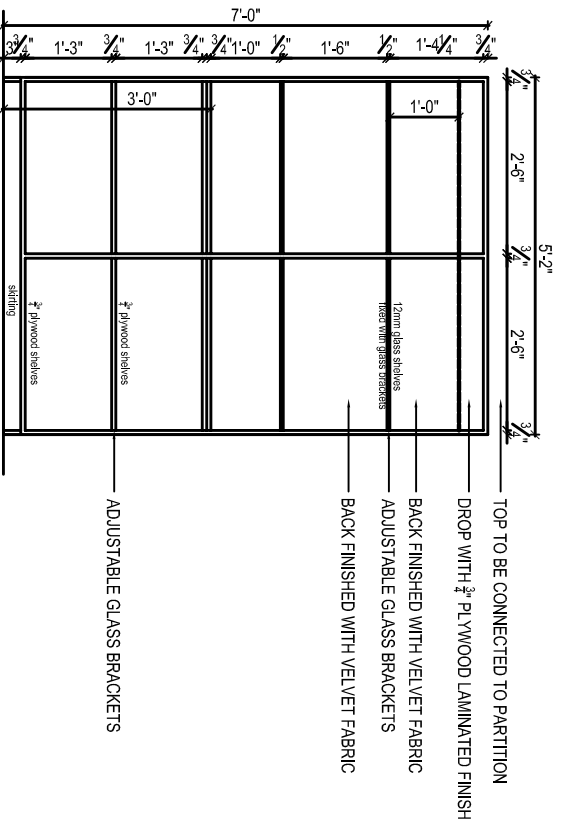
Date : _____ App. by: _____
 Dwg No: _____ Chkd by: _____
 Scale : 1" = 2'0" Dm by: _____
 ARCHITECTS: _____ Off: 044 2239 2533
 Mob: 98412 91968

SRISHITTA
 THE CREATIVE PEOPLE

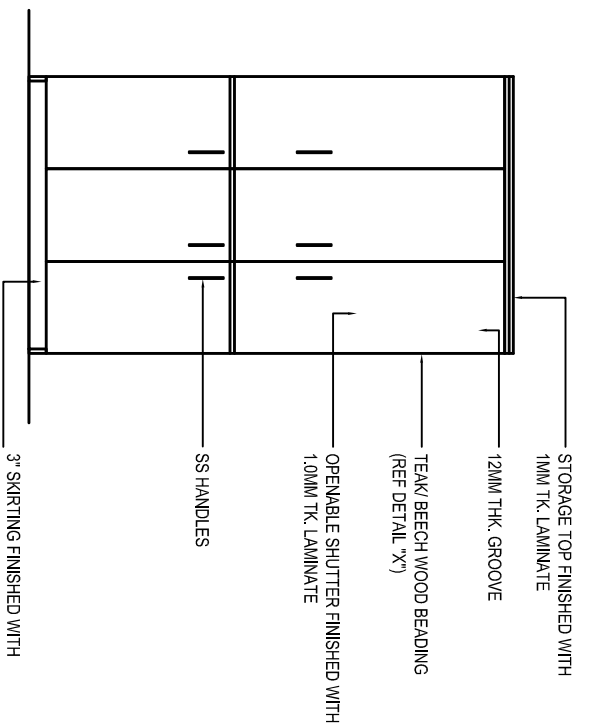
No. 258, Tambaram - Velachery Road,
 Salajur, Chennai - 600 073.
 email : architect_sridaran@rediffmail.com



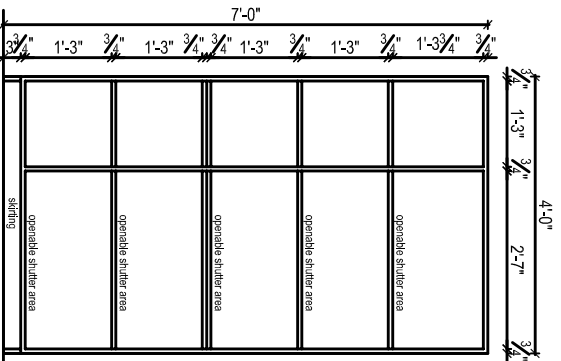
**CURIO/ DISPLAY CUPBOARD
WITH SHUTTERS CLOSED**



**CURIO/ DISPLAY CUPBOARD
DETAIL OF CARCASS**



**FULL HEIGHT STORAGE
WITH SHUTTERS CLOSED**



**FULL HEIGHT STORAGE
DETAIL OF CARCASS**

- GENERAL NOTE:**
1. Do not scale this drawing, follow figured dimensions only.
 2. Any discrepancy at site has to be brought to the notice of the architect before execution.
 3. All dimensions are in feet & inches.
 4. For make and shade of materials follow list of approved materials.
 5. For specification follow tech specification

DRAWING TITLE
Detail : FULL HEIGHT STORAGE
Size : 4'0" X 1'6" X 7'0"
Orient : Depth as per site requirement)
Detail : CURIO CUPBOARD
Size : 5'2" X 1'6" X 7'0"
Orient : Left & Right (as per site requirement)

PROJECT TITLE
EGGC LTD.,
TAMBARAM BRANCH,
CHENNAI.

Date :
Dwg No :
Scale : 1" = 2'0"

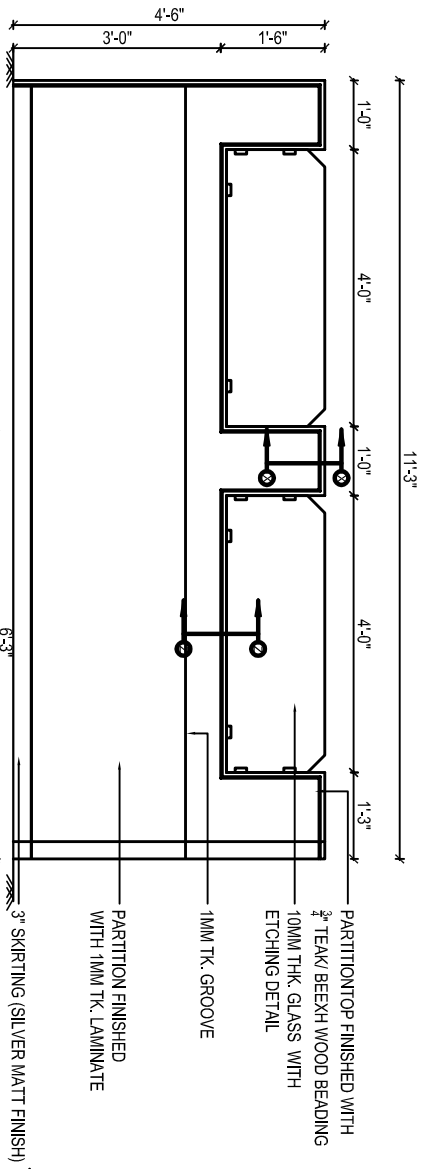
App. by :
Chkd by :
Drm by :

ARCHITECTS:
Off: 044 2239 2533
Mob: 98412 91968



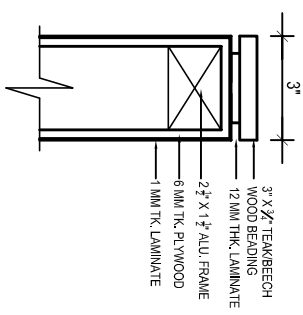
No. 258, Tambaram -- Velachery Road,
Salajpur, Chennai - 600 073.
email : architect_sridaran@rediffmail.com

- GENERAL NOTE:**
1. Do not scale this drawing, follow figured dimensions only.
 2. Any discrepancy at site has to be brought to the notice of the architect before execution.
 3. All dimensions are in feet & inches.
 4. For make and shade of materials follow list of approved materials.
 5. For specification follow tech specification



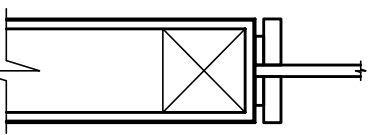
PARTITION TOP FINISHED WITH
 $\frac{3}{4}$ " TEAK/ BEECH WOOD BEADING
 10MM THK. GLASS WITH
 ETCHING DETAIL
 1MM TK. GROOVE
 PARTITION FINISHED
 WITH 1MM TK. LAMINATE
 3" SKIRTING (SILVER MATT FINISH)

DETAIL X - X



3" X $\frac{3}{4}$ " TEAK/BEECH
 WOOD BEADING
 12MM THK. LAMINATE
 2 $\frac{1}{2}$ " X $\frac{1}{2}$ " ALU. FRAME
 6MM THK. PLYWOOD
 1MM THK. LAMINATE

**SECTION AT Z-Z
(FOR FIXING GLASS)**



DRAWING TITLE
 Detail : LOW HEIGHT PARTITION
 Size : 11' 3" X 4' 6"
 Orient : (as per site requirement)
Detail : REAR SIDE STORAGE UNIT
 Size : 4' 0" X 1' 6" X 2' 3"
 Orient : Left & Right (as per site requirement)

PROJECT TITLE
 EGGC LTD.,
 TAMBARAM BRANCH,
 CHENNAI.

Date :
 Dwg No :
 Scale : 1" = 2' 0"

App. by:
 Chkd by:
 Dm by:
 ARCHITECTS:

Off: 044 2239 2533
 Mob: 98412 91968


SRISHITTA
 THE CREATIVE PEOPLE
 No. 258, Tambaram - Velachery Road,
 Salajpur, Chennai - 600 073.
 email : architect_sridaran@rediffmail.com

**LOW HT PARTITION (SIDE)
ELEVATION A**